

Press release  
11 October 2017



## **Gyros Protein Technologies signs distribution agreement with Euro Diagnostica**

*Gyros Protein Technologies becomes distributor of iLite cell-based reporter gene assays for drug development*

**Uppsala and Malmö, Sweden, 11 October 2017:** Gyros Protein Technologies AB, a pioneer in automated nanoliter-scale immunoassays and leading provider of peptide synthesizers and reagents, today announced it has signed a distribution agreement with Euro Diagnostica, the full service assay solution company. The agreement will give Gyros Protein Technologies' customers in Europe and North America direct access to the *iLite*<sup>®</sup> assay ready cell lines from Euro Diagnostica, which help overcome limitations of conventional cell-based assays and improve productivity.

The *iLite* technology is based upon a unique reporter gene assay format, modified and adapted for applications through the whole drug development cycle as well as for monitoring of biological drugs. The applications addressed by *iLite* reporter gene assays are highly complementary to those addressed by Gyros Protein Technologies' Gyrolab<sup>™</sup> immunoassays systems, such as pharmacokinetics studies, detection of ADA (anti-drug antibodies) and bioprocess applications. The *iLite* dual reporter gene format allows for normalization of the response, eliminating unwanted matrix effects and compensating for differences in cell numbers, to achieve accurate and biologically relevant results. The cells are delivered frozen and assay ready, requiring no culture or maintenance, to enable cost reductions and time savings.

*iLite* assays have been designed to support screening of drug candidates, detection of neutralizing antibodies (NAb) as part of immunogenicity assessment, and potency measurements in manufacturing release tests. NAb are a subset of anti-drug antibodies (ADA) that bind to the therapeutic molecule resulting in its inhibition or complete neutralization, and affect the clinical efficacy of the drug. Detection and elimination of NAb is key to reducing the potential patient side effects of these unwanted drug components. The FDA recommends the use of cell-based neutralization assays over ligand-binding formats, when appropriate, as these more frequently provide physiologically relevant results.

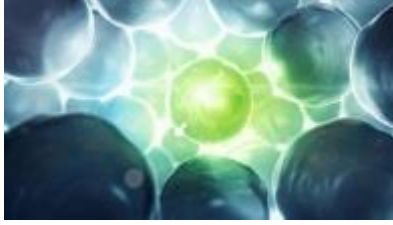
**Dan Calvo, CEO and President at Gyros Protein Technologies, said:** "The *iLite* technology is an ideal addition to our offering, and is a natural complement to Gyrolab systems. This agreement with Euro Diagnostica further strengthens the position of Gyros Protein Technologies as a key analytical tools provider focused on developing and supplying drug immunogenicity and biologics solutions that increase productivity for customers in the biopharma and biotech industry."

**Dennis Hutchison, CCO of Euro Diagnostica, commented:** "We are pleased to have Gyros Protein Technologies as our partner. This distribution agreement is an important step in enabling more researchers to access *iLite* cell lines, saving costs and improving productivity in cell-based assays."

For more information please visit <http://www.gyrosproteintech.com/>

**ENDS**

**Notes to editors**



**Photo: *iLite***

**For a high-resolution image please contact Zyme Communications.**

**Media contact:**

Katie Odgaard

Zyme Communications

Tel: +44(0)7787 502 947

Email: [katie.odgaard@zymecommunications.com](mailto:katie.odgaard@zymecommunications.com)

**About Gyros Protein Technologies** (For more information please click [here](#))

Gyros Protein Technologies, enables peptide synthesis and bioanalytical solutions that help scientists increase biomolecule performance and productivity in research, drug discovery, pre-clinical and clinical development, and bioprocess applications. Our low to mid-scale peptide synthesizer platforms are the Tribute®, Prelude® X, Symphony® X, and Sonata®. These solutions and our chemistries deliver uncompromising purity, flexibility, and quality for discovery and pre-clinical studies of simple to complex multifunctional peptides. Proprietary high performance nanoliter-scale immunoassay platforms, Gyrolab™xP workstation and Gyrolab xPlore™, are used by scientists in leading pharmaceutical, biotech, CRO, and CMO companies for bioanalytical applications such as pharmacokinetics/pharmacodynamics, immunogenicity, and quantitating bioprocess-related impurities. Our peptide synthesis and bioanalytical solutions accelerate your discovery, development, and manufacturing of safer biotherapeutics.

**About Euro Diagnostica** <http://www.eurodiagnostica.com>

Euro Diagnostica facilitates the development of safe and efficient drugs and optimal treatment of patients by providing cutting edge assays. By offering versatile assay solutions to Pharma, Biotech and CRO customers Euro Diagnostica is an optimal partner in drug development from the exploratory phase to and beyond clinical trials. We also provide clinical labs and physicians with tools to aid in diagnosis, prognosis, monitoring and treatment of inflammatory and related diseases. Euro Diagnostica proudly offers our clients: Top quality ELISA and RIA kits, Unique Cell-based Assays, Custom, Solutions and OEM, Dedicated ISO 17025 and GLP/GCP Laboratory Services.